



The Developer Tools Lite workshop is a 1-Day Hands-on Training using *BioGraph Infiniti Screen Editors and Scripts*. It teaches you how to make quick modifications on-the-fly to screens, and build new screens & scripts.

Lite Editing Display Screens & Sounds: *Screen Editor Lite, Editing Mode, Set Sound Feedback Options, Audio File Selection; Midi Songs, Wav files, MP3 files, Defining Animation Settings, Threshold Type Settings, Feedback selections for instruments, Instrument properties, Color and texture options, Instrument sizing and organization, Saving a new screen, Saving changes by overwriting a screen.*

Application Suites: *Overview of suites, channel sets, screens, scripts and client data, menu review, selection of data channels, data display options, threshold types, scaling / auto / manual, averaging and smoothing, connecting accessory items to computer, a second monitor for dual-monitor screens, one or two Web cams to synchronize video with psychophysiological signal.*

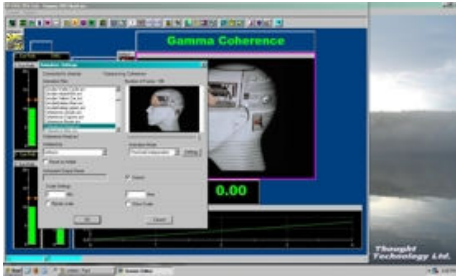
Screen Editing: *Screen Editor, labels, prompts, double-monitors, moving instruments.*

Script Editing: *Saving changes to an existing script, changing step duration, loading different screens, default settings vs. client settings.*

PARTICIPANTS WILL LEARN HOW TO:

- Create screens that can record synchronized video and physiological data.
- Incorporate multimedia capabilities including the ability to play Wav, MIDI, AVI, MP3 files.
- Create and use screens that do feedback from music CDs. Use multi-line graphs that show up to 8 signals on a single graph.
- Manually and automatically adjust threshold option for constant percentage of reward.
- Create screens with displays that allow on the fly changes to filter cutoff frequencies while recording.

Screen Editor Lite:



See your ideas come alive on screen: The Screen Editor Lite allows you to do lite editing such as setting sound feedback options, select audio files, midi songs, WAV files, MP3 files, define animation settings, thresholds and other items and save changes with a new name.

Script Editor

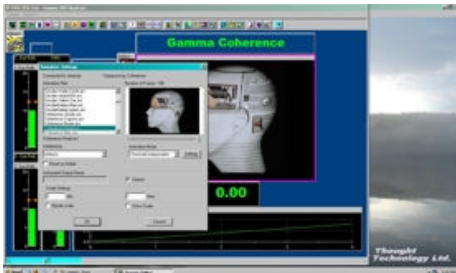


Assessment and Training Scripts: Learn how to use time- and event-based to run sessions that guide the client through a pre-defined sequence of activities and generate activity-specific statistics.

Build your own assessment and training scripts: The Script Editor is a powerful programming tool for creating session scripts (also known as protocols), which can automatically load display screens, give instructions, play media events and pause recording. Time-based or event-based script sessions can save you from having to perform many repetitive and tedious tasks. A

script is defined as a sequence of activities and can be used for performing standardized assessments and breaking down data into statistically significant segments. Sessions recorded from scripts can be trended in the BioGraph Infiniti software. The Script Editor offers a Wizard mode, which guides beginner users through the sequence of steps involved in creating simple or complex session scripts.

Screen Editor:



See your ideas come alive on screen: The Screen Editor is a visual tool that enables you to build any number of new display screens for biofeedback and data acquisition purposes. With a toolbox of over 20 instruments to select from, creating a single or multi-monitor display is as easy as clicking on an instrument and placing it on the screen. The toolbox includes standard graphs, event counters, a correlation graph, multimedia tools, and new logic instruments that will allow you to create sophisticated feedback environments with selective inhibiting and immediate or discrete rewarding capabilities.

Synchronize psychophysiology with video:

Extending your toolbox for client assessment and training, the BioGraph Infiniti™ software allows you to record your client's actions with one or two Web cams, and synchronize the video with the physiological signals.

Specialized session reports: Scripted sessions generate sophisticated statistical reports that break down the session's data into meaningful segments and give you appropriate statistics for each segment. This ensures that you get only the most clinically significant information without having to sort through irrelevant numbers. Both raw and statistical data is saved.

Trend reporting on client progress: BioGraph Infiniti's powerful trend report capabilities allow you to follow a client's progress from visit to visit, which gives you guidance regarding the next step to take. Trend reporting lets you easily demonstrate a client's learning curve, both during a given session and across sessions, to enhance case management and to facilitate reimbursement.

CONTINUING EDUCATION ACCREDITATION: This course has been approved by the Biofeedback Certification Institute of America (BCIA) to provide 7-hours of Category A. accredited continuing education for BCIA recertification. These seven hours are divided into 4-hours of General Biofeedback; Orientation to Biofeedback 1-hour, Psychophysiological Recording 1 hour, SEMG Applications 1 hour, EEG Applications 1 hour, and 3-hours of EEG Biofeedback; Orientation to EEG Biofeedback 1-hour, and Instrumentation and Electronics 2-hours.

COURSE PREREQUISITES: This course is intended for licensed health professionals and participants are encouraged to seek BCIA accreditation if they are not already accredited. As this workshop is a "hands-on" learning experience, you are strongly urged to bring all your equipment with you to the workshop (including laptop with software, encoder and sensors).

WORKSHOP FEES: \$100.00 USD. Course Fee includes all handout materials and light refreshments.

WORKSHOP METHOD OF PAYMENT:

Name and Title:		
Address:		
City:		
State/Province:	Zip:	Country:
Tel:	Fax:	
E-mail:		
Clearly indicate the date(s) and location(s) of selected workshop(s)		
Please fill in the following details and fax to (514) 489-8255 or e-mail to workshops@thoughttechnology.com. Please note that registration is valid only when full payment is received		
VISA <input type="checkbox"/>	Mastercard <input type="checkbox"/>	American Express <input type="checkbox"/>
Credit Card # :	Expiry Date :	
Name on Credit Card :		
Signature of Card Holder :		

CANCELLATION POLICY: Cancellations must be received in writing if requested prior to 2 weeks before the course date. You will receive credit towards a future course minus an administration fee of \$50.00 USD. Cancellations after this date forfeit registration fee. TTL reserves the right to cancel the course with full refund.

FOR MORE INFORMATION OR TO REGISTER:

Workshop Coordinator
Thought Technology Ltd.
2180 Belgrave Avenue
Montreal, QC, Canada H4A 2L8
Tel: (514) 489-8251 Ext.135
Fax: (514) 489-8255
E-mail: workshops@thoughttechnology.com
www.thoughttechnology.com

For U.S. Residents:	All Other Countries:
Attention: Workshops	Attention: Workshops
Thought Technology Ltd.	Thought Technology Ltd.
C/O Cimetra, 20 Gateway Drive	2180 Belgrave Avenue
Plattsburgh, NY 12901	Montreal, Quebec, Canada
USA	H4A 2L8

PRESENTERS: The following is a list of the outstanding presenters who instruct the 1-day course and will guide you to a better understanding of your instrumentation:

Campbell, Harry, BPS, BCIAC, NRNP. Harry is certified by Biofeedback Certification Institute of America (BCIA), certified by NRNP (National Registry of Neuronal Providers), certified by BCI (Biofeedback Consultants, Inc.), earned a bachelors degree in Health Care Technology from Empire State College, and employed by Biofeedback Resources International Corp (formerly American Biotec Corporation) since 1984. Harry has trained hundreds of professionals in biofeedback and the use of biofeedback equipment for Health Training Seminars - the training division of Biofeedback Resources International Corp.

Combatalade, Didier, D.C. Didier Combatalade is the Research Manager at Thought Technology. Didier has over 20-years experience in the healthcare industry as a clinician and in software development. Following 7-years of chiropractic experience in both private practice and a large, multidisciplinary clinic, he pursued further training in electronics and computer systems. Didier has developed printed and multimedia materials for user training and is a seasoned instructor who is very easy to follow and knows how to make material interesting. Didier is a regular presenter at the annual conferences of the AAPB, ISNR & BFE.

DeGregorio, Frank. Frank DeGregorio has a Diplome d'Etuded Collegiale (DEC) in Computer Science and Certification in Networking. He has over a decade of experience as technical, network, computer and product support for Thought Technology. Frank does high-level trouble-shooting, and has over 5-years of experience teaching BioGraph workshops with Lynda Thompson, Ph.D. Frank's extensive knowledge of all the product software and hardware offered by Thought Technology gives him the unique ability to take participants from installation of the software to using it effectively. Frank has also taught for 3-years at the Biofeedback Foundation of Europe and for the Biofeedback Society of Florida.

Dupont, François, Ph.D. Dr. François Dupont is a Registered Clinical Psychologist in private practice at the University of Ottawa, Health Services. Dr. Dupont has used bio/neurofeedback in the context of chronic pain, tinnitus, high blood pressure, ADD/ADHD, anxiety, mild head-injury, cancer, HIV, OCD, trauma, and others. Dr. Dupont's basic orientation is eclectic and he often combines bio/neurofeedback with techniques borrowed from cognitive-behavioural, dynamic, humanistic and experiential approaches. His doctoral dissertation dealt with the use of sub-threshold audio recording on EEG and behavioural changes in ADD/ADHD children.

Schully, Nancy, BA, BCIAC. Nancy Schully, is founder and President of Southern Biofeedback Corporation, which is a leading distributor of biofeedback instrumentation and educational seminars for the treatment of pelvic muscle dysfunction. She provides consultation services for instrumentation sales and in-service instrumentation training to clinics, institutions and private practitioners throughout the nation. She has over 20 years of clinical and instrumentation experience in biofeedback applications and behavioral interventions.

Schwartz, Mark, BSc. Hons, MBA. Mark Schwartz is a project manager with the Biofeedback Foundation of Europe responsible for research and education projects linking European researchers and clinicians with their counterparts in North America. He has over 10-years of experience in biofeedback projects and for the last 3-years has taught workshops in Europe and North America on the use of biofeedback instrumentation. He recently became involved in online education. His BSc. Hons is in Psychology from Manchester University, England. His MBA is from Laval University in Quebec.

Srivastava, Sandhya, B.Eng. Sandhya graduated from Concordia University with a degree in computer engineering and software systems. She has worked at Thought Technology for 3-years as a software developer, playing a significant role in the development of the new hand-held MyoTrac Infiniti device for rehabilitation and incontinence. Sandhya is also nvolved in the creation of online and stand-alone training materials for biofeedback accreditation and recertification.

Tian, Shawn. B.A. MBA. Shawn has 3-years of experience in technical sales to Asian markets, software development, technical support and teaching with Thought Technology. Shawn has taught workshops in South Africa, Australia, the United States, China, Hong Kong, and Thailand. He also instructed workshops with Steve Sideroff, Ph.D, in Indonesia. Shawn is also involved in the development of clinical software suites with a number of biofeedback experts in North America and overseas including, Sue Wilson, Ph.D, Howard Glazer, Ph.D., Stu and a Bachelors Degree from Shanghai Fudan University in China.